

# Electrify America National Cycle 2 ZEV Investment Plan

02.2019



# Electrify America's Cycle 2 plan supports our mission to develop an ultra-fast, comprehensive fueling network for all

## Cycle 2 Principles

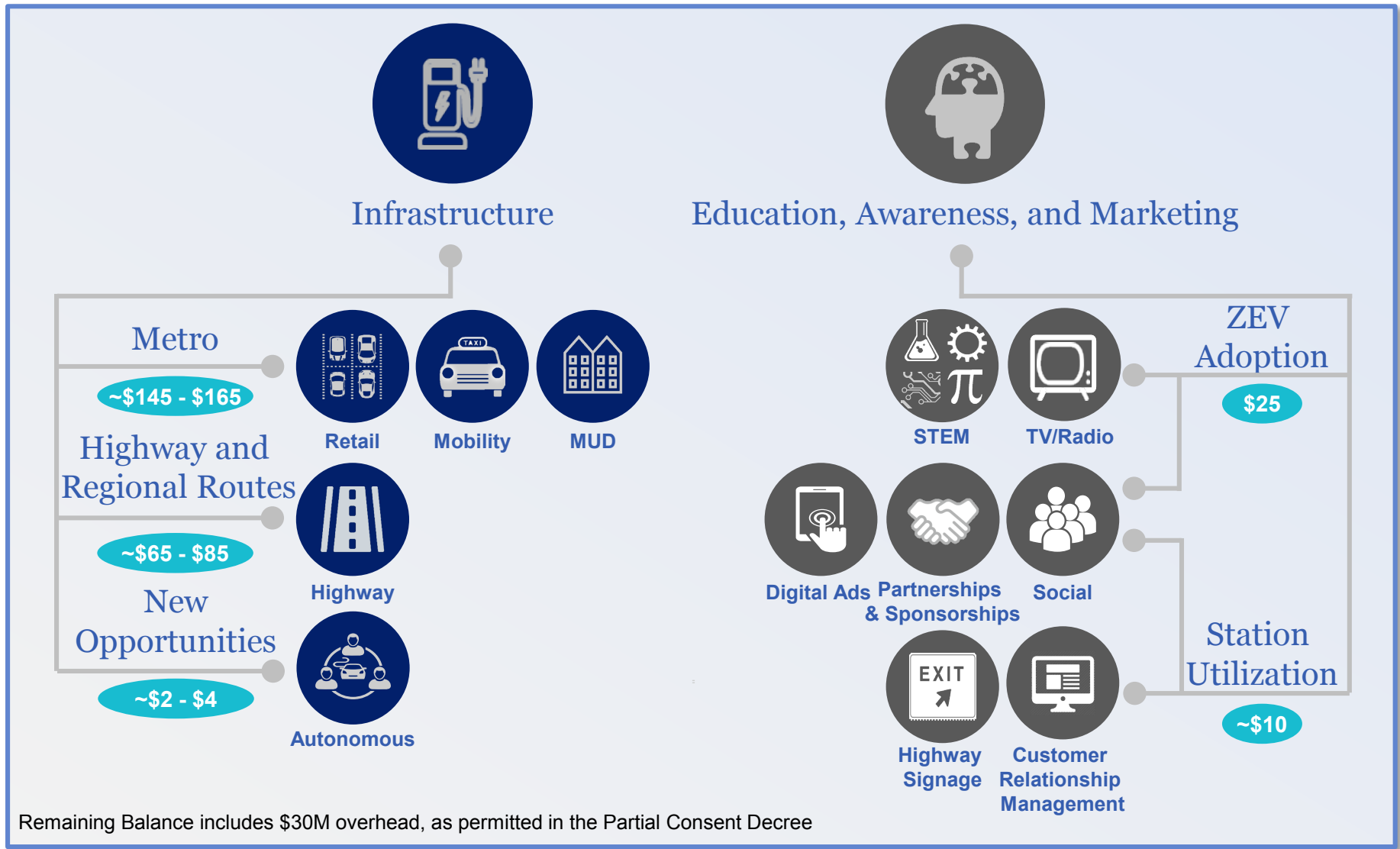
Start from the fundamentals

Engage external stakeholders

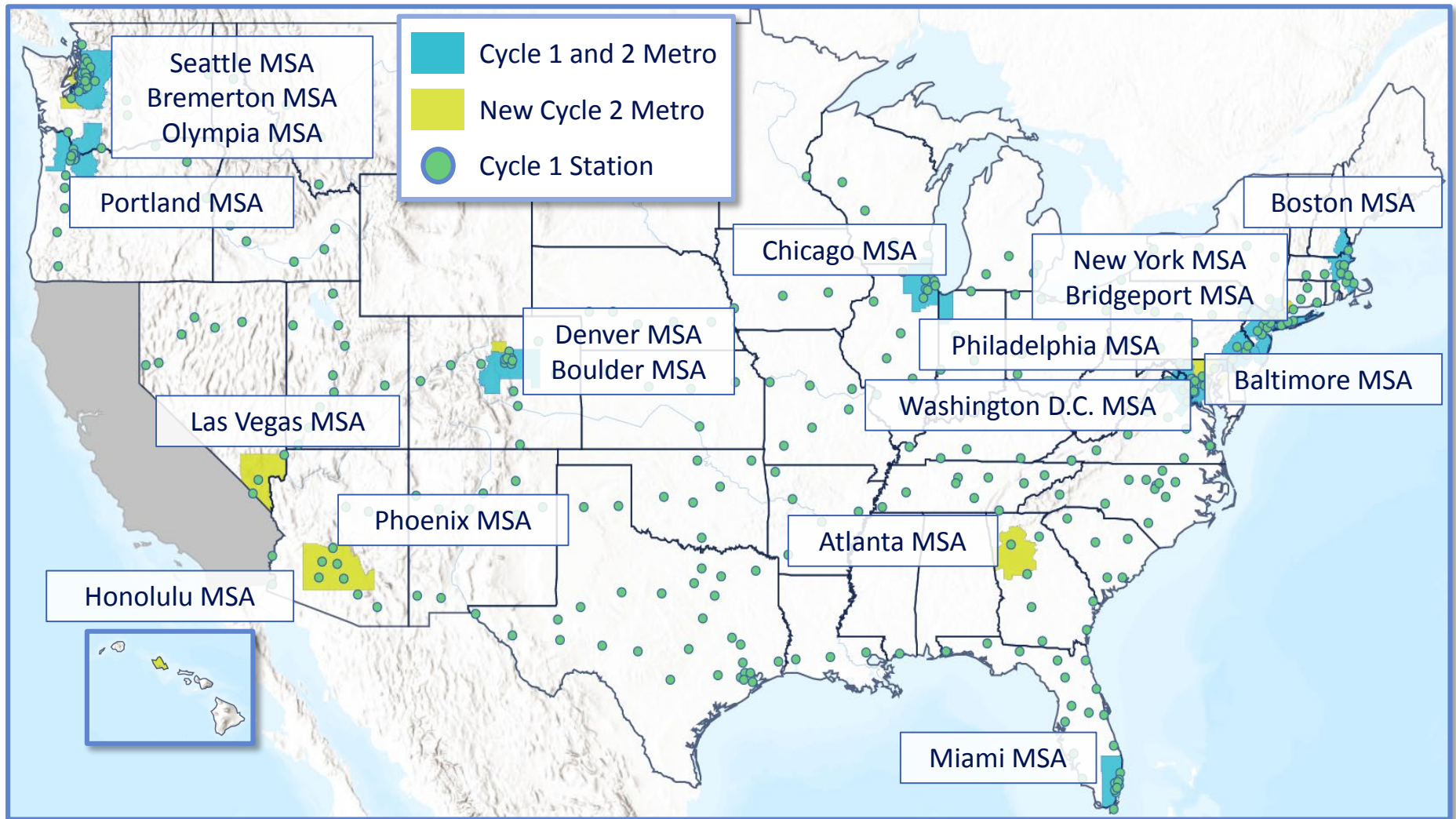
Emphasize real world inputs



# The Cycle 2 Plan invests \$300M nationally between July 1, 2019, and December 31, 2021, to increase ZEV adoption



# Cycle 2 investments will be made in 18 metropolitan areas across the country

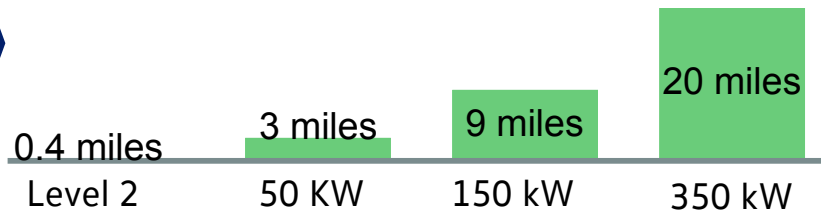


# Electrify America stations will continue to feature ultra-fast charging speeds with customer-focused features and design

## Speed

Miles of range\* per minute charged by DCFC power

\*Assumes 3.5 miles per kWh



## Connections

Non-proprietary chargers at all stations:  
CCS and CHAdeMO

## Payment

Credit card access

RFID, Mobile Pay & app access

Plug and Charge (CCS ISO15118)



# Electrify America's Cycle 2 ZEV Investment Plan was developed to meet the needs of drivers and communities

## Engagement Efforts



## Key Stakeholders

State, Local and Tribal Governments

Federal Agencies: DOT, DOE

Environmental Justice Groups

Community-Based Organizations

Academics, National Labs

Veloz, NASEO, NESCAUM

Utilities

Auto, Bus & Fleet Manufacturers

## National Outreach Process

- Nearly 800 submissions received
- More than 100 phone calls and dozens of in-person meetings to follow up